



PIONEERING SHELTER
SOLUTIONS FOR A
SAFER WORLD

PORS SEAL BUILDING

SUZHOU PORS SEAL BUILDING MATERIALS CO., LTD



Tel: +400-097-0801 +86-13706201117

E-mail: info@porshseal.com Web: www.porshseal.com

Add: No. 505 Jiushenggang Road, Wuzhong District, Suzhou, China.

COMPANY

We are a factory specializing in the production of safety shelters, integrating R&D and manufacturing. We mainly serve the military and the government. Every year, we collaborate with multiple institutions and universities to develop the most advanced technologies in the industry. The protective shelters we provide are applicable to war zones, high risk chemical areas, mining areas, fire zones, post war areas, and post disaster reconstruction areas. Through continuous research and exploration every year, we are committed to developing more cost effective and safe practical security shelters for those in need.

Founded as a Sino
British joint venture



Passed the ISO9001 quality
system certification



1997

2000

2002

2010



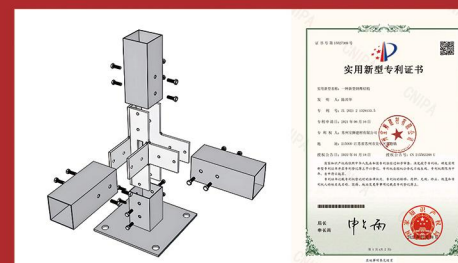
Started foreign trade,
main market: USA



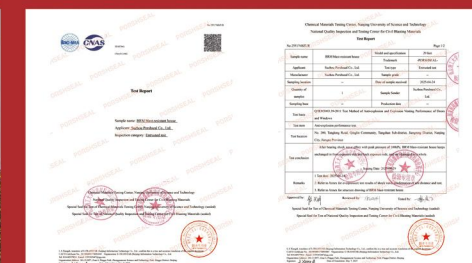
Development of
prefabricated integrated
housing

DESCRIPTION

Gain the patent for anti
seismic steel structures



Supplier for Shanghai
Disneyland



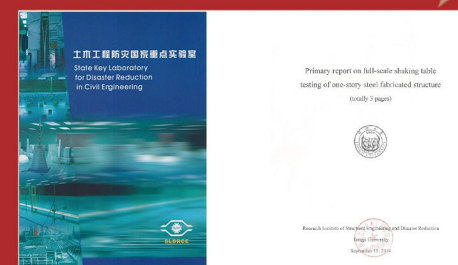
2013

2014

2016

2020

2025



Certified to withstand
earthquakes above
magnitude 9



Installed 180,000 sqm
of modular insulated
cabins for highland area



BRM blast resistant house
Anti explosion rformance
test

ENTERPRISE TEAM

PIONEERING SHELTER SOLUTIONS
FOR A SAFER WORLD



Founder: Chen Xinghua

- One of the first generation university graduates after China's revolution
- 1990: Training in Japan, introduced FMM casting line to China
- Founded Suzhou Porshseal Building Materials Co., Ltd. in 1997
- Led R&D in earthquake resistant structures, SIP housing, and blast resistant shelters ect
- Gained more then 32 patents in the construction industry

01 Self owned factory

The production and manufacturing base covers an area of over 72 mu. It has introduced advanced manufacturing equipment in the industry and built a modern facility.

03 Service advantage

With a group of high quality production, installation and management personnel as well as experienced technical talents, a solid foundation has been laid for customized product services.

02 Research and development strength

We have been engaged in in depth cooperation with renowned research laboratories such as the Army Engineering University and the Army Logistics College for a long time, and are committed to the innovation and application of integrated houses.

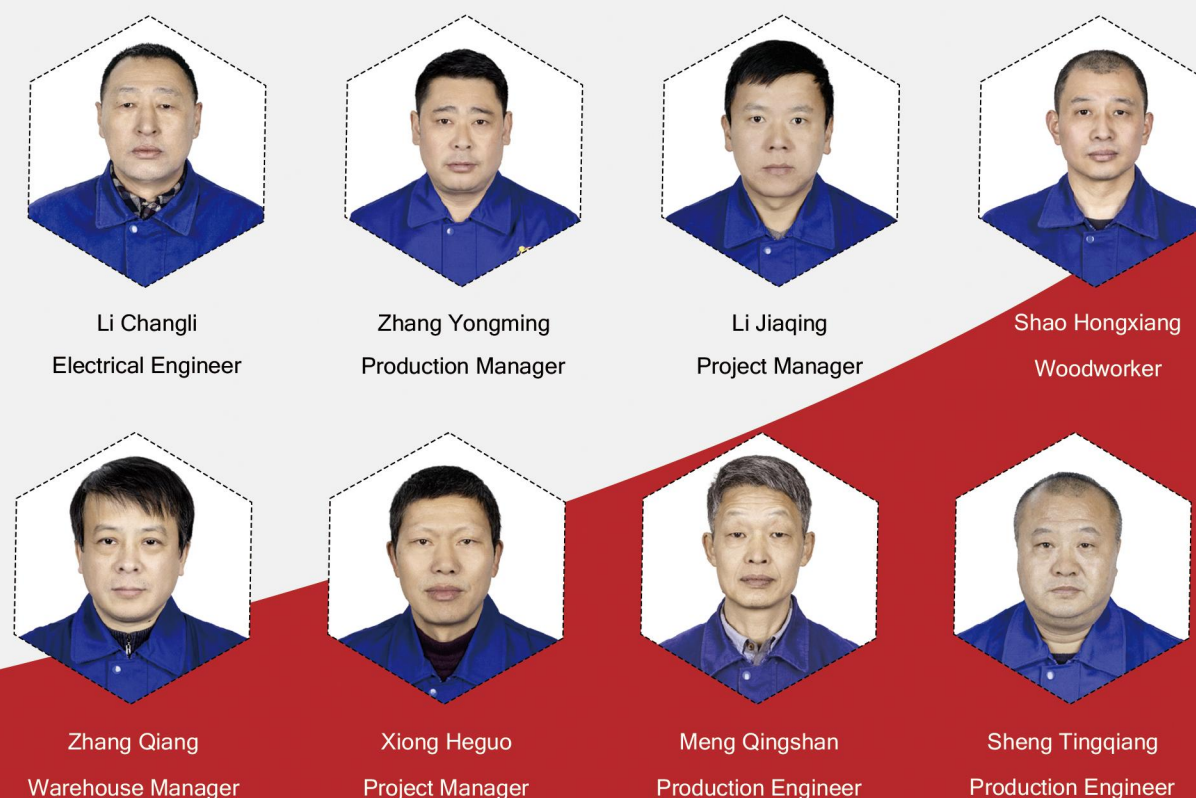
04 Product advantages

Our product line is rich and diverse, including military life support, military security support, civilian private customization, cultural tourism and vacation products etc.

Technical Team



Production Team





HONOR



CERTIFICATE



THE COMPANY HOLDS 32 PATENTS

STRATEGIC PARTNERSHIPS

01

Partnerships with research institutions

We have long term partnerships with national research institutions, enhancing our R&D capabilities.

02

Collaboration with leading universities

Our collaborations with top universities ensure we are at the forefront of technological advancements.



State Key Laboratory of Civil Engineering
Disaster Prevention



Tongji University



Nanjing University of Science and
Technology



Hefei University of Technology



BLAST RESISTANT BUILDING

The design and manufacture of blast resistant houses comply with international standards. These devices can be supplied in standard sizes or customized according to customer requirements. According to customer needs, blast resistant houses can be equipped with detection systems, alarm systems, ventilation systems, control systems, power supply systems, communication systems and public systems. The products can meet the needs in different hazardous environments.

01



**20GP/40HQ
Container
BRM house**

02



**Prefabricated
BRM House**

03



**Modular mini
BRM House**



Test conditions		Test results
1) Test medicine column: 1000g PETN/TNT (mass ratio: 1:1) medicine column;	After bearing shock wave effect with peak pressure of 100kPa, BRM blast-resistant house and medicine column explosion core is 2.88m;	After bearing shock wave effect with peak pressure of 100kPa, BRM blast-resistant house keeps unchanged in front exposure side and back exposure side, and isn't damaged as a whole
2) The horizontal distance between BRM blast-resistant house and medicine column explosion core is 2.88m;		
3) The peak pressure value of shock wave at 2.88m is 100kPa		

Test result

Anti explosion test report



Live footage of the blast resistance test site

20GP/40HQ CONTAINER BRM HOUSE

EXPLOSION RESISTANCE ADVANTAGE

Personnel safety guarantee

In a TNT explosion at a certain distance, the probability of internal personnel being injured is reduced by 99% (compared with ordinary buildings).

Device protection capability

Protect precision instruments and valuable items from direct external impacts.

Environmental adaptability

Corrosion resistant coatings are suitable for extreme environments such as energy and chemical plants.



Content		20GP	40HQ
Dimensions (L*W*H)	External	6060X2440X2590mm	12200X2440X2890mm
	Internal	5700X2150X2140mm	11800X2150X2440mm
PSI Rating		14.5PSI / 100KPA	14.5PSI / 100KPA
Duration		800MS	800MS
Blast resistant Door (L*W)		900X2000mm	900X2000mm
Blast resistant Window (L*W)		1200X800mm	1200X800mm
Explosion proof Lighting (LED)		3 set	6 set
Explosion proof Smoke Detector		1 set	2 set
Explosion proof Emergency Exit Sign		1 set	2 set
Explosion proof Lighting Switch		1 set	2 set
Stainless Steel Power Distribution Box (with Simple Rain Cover)		1 set	1 set
Explosion proof Temperature Control System		3P Wall mounted Air Conditioner (1 unit)	3P Wall mounted Air Conditioner (1 unit)



POSITIVE PRESSURE SYSTEM

optional positive pressure system: Automatically blocks external polluted air, maintaining the cleanliness of indoor air.



COMFORTABLE HOME

can not only meet the daily living needs, but also be able to deal with sudden dangers.



HIGH RISK OFFICE AREA

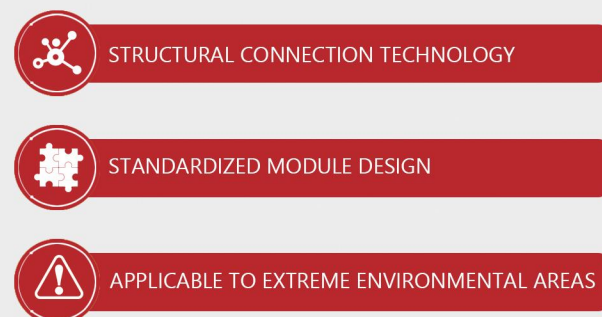
can not only meet the daily living needs, but also be able to deal with sudden dangers.



OVERALL TRANSPORTATION, NO ON SITE ASSEMBLY REQUIRED

PREFABRICATED BRM HOUSE

The prefabricated BRM house is a safety protection building that combines prefabricated modular design and industrial explosion proof technology, It can be flexibly configured according to the customer's size requirements.



INSTALLATION PROCEDURE



1.Preparations



2.Assemble the bottom part



3.Installation of upright posts



4.Install the top section

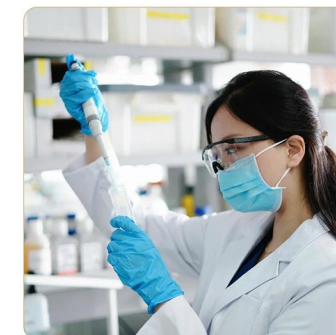


5.Install the side walls

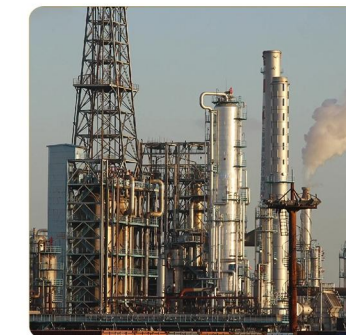


6.Install the roof panel

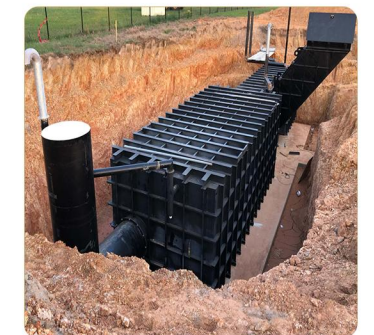
APPLICATION SCENARIOS



Site laboratory



Chemical plant Office



Underground Safehouse



Disassembly transportation and assemble on site, Large scale buildings can be constructed.

MODULAR MINI BRM HOUSE

Modular mini BRM House: An emergency shelter for war torn areas, providing anti blast safety and offering a temporary refuge in case of evacuation failure.



Content		specification and dimension
Dimensions (L*W*H)	External	2200X2200X2400mm
	Internal	2000X2000X2200mm
PSI Rating		14.5PSI / 100KPA
Duration		800MS
Blast resistant Door (L*W)		900X2000mm
bench (L*W)		2000X400mm (2 set)
Explosion proof Lighting (LED)		1 set
Explosion proof Smoke Detector		1 set
Explosion proof Emergency Exit Sign		1 set
Explosion proof Lighting Switch		1 set
Stainless Steel Power Distribution Box (with Simple Rain Cover)		1 set
Wall mounted fresh air machine		1 set

APPLICATION SCENARIOS



Areas with frequent wars



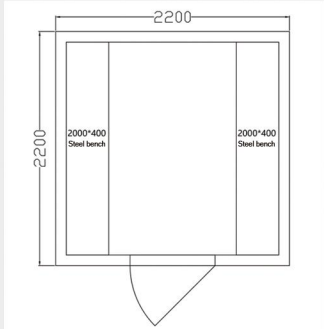
Border Guard Station



Valuable Goods Storage Room



Internal sectional view



Floor plan



Wall mounted fresh air system



Overall transportation,
40HQ container can hold 5 sets.



PIONEERING SHELTER SOLUTIONS FOR A SAFER WORLD

